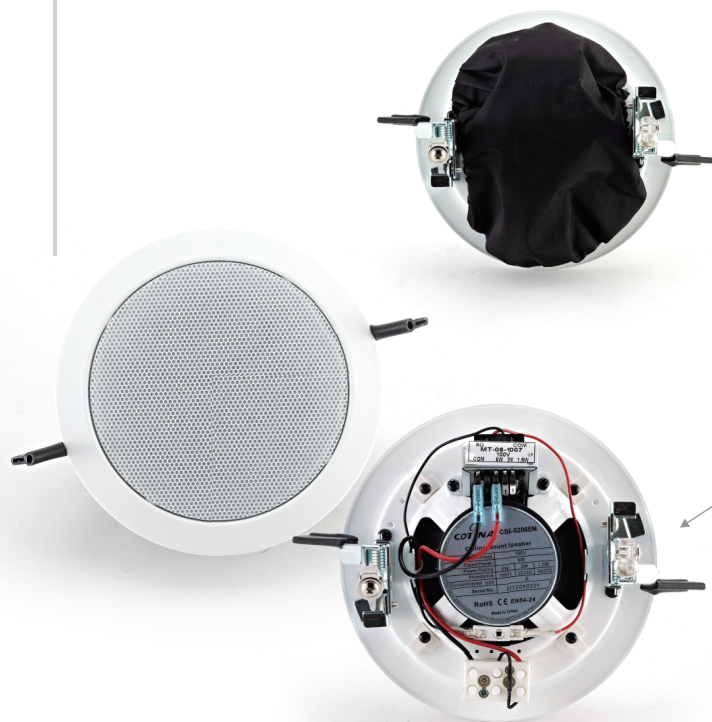
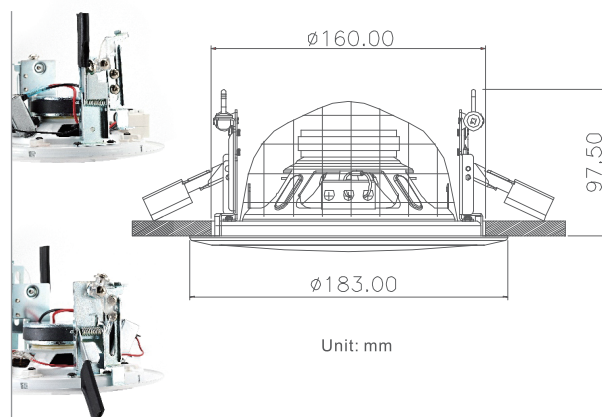


METALLIC CEILING SPEAKER

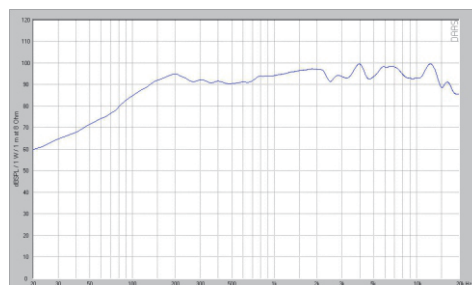
(EN54-24)



ONE SECOND INSTALLATION



Unit: mm



SPECIFICATIONS

Model No.	CSE-5206EN
Rated Power (rms)	6W
Speaker	5" Full Range, With Dual Cone
Power Rating(100V)	6W - 3W - 1.5W
Impedance	1667Ω - 3333Ω - 6667Ω
S.P.L.(at 1W/1M)	92dB
Maximum Acoustic Pressure	99dB
Frequency Response(-10dB)	100 Hz ~ 20K Hz
Dispersion 1KHz / 4KHz	130° / 60°
Ambient Temperature	-10°C ~ +55°C
Compliant Standard	EN54-24
Dimension	183mm(Dia.)x97.5mm(H)
Cut-Out Diameter	160(Dia.)mm
Material	Steel
Colour	White
Weight	1.0Kg
Power Selection Method	Plug ,Ceramic Terminal Block
Patent No.	Nr. 20 2011 005 495.0 , M 408895

EN54-24 CERTIFICATED

CSE-5206EN